

**EVERDIGM**  
**Top Hammer Drill**  
**T Series**

**EVERDIGM**

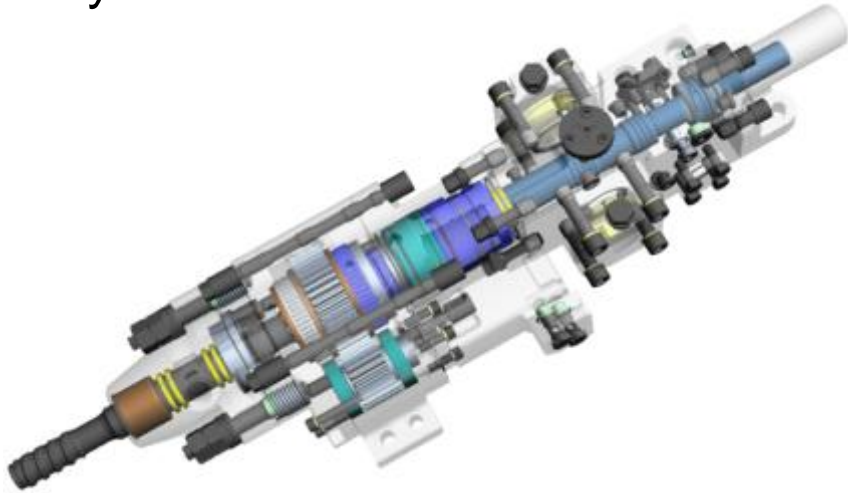
## Table of Contents

1. Line Up & Specifications
2. Key features
3. Maintainability
4. Safety devices
5. Optional equipment
6. Drilling Test Report
7. Comparison
8. Reference

## 1. Line Up & Specifications \_ T Series

		T400	T450	T500
<b>Boom &amp; Mast</b>		Telescopic & Steel Mast	Telescopic & Steel Mast	Telescopic & Steel Mast
<b>Hole diameter</b>		64~102mm (2.5" - 4")	75~115mm (3" - 4.5")	75~127mm (3" - 5")
<b>Drill steel</b>		T38, T45 (3,660mm)	T45, T51 (3,660mm)	T45, T51 (3,660mm)
<b>Hole depth</b>		25m	25m	25m
<b>Rock drill</b>		EHD185 (18.5 kW)	EHD210 (21 kW)	EHD230 (23 kW)
<b>Engine</b>	<b>Tier 4 final</b>	Tier 4 Cummins QSB6.7 (160 kW, 215 hp)	Tier 4 Cummins QSB6.7 (160 kW, 215 hp)	Tier 4 Cummins QSB6.7 (194 kW, 260 hp)
<b>Air compressor</b>		6 m <sup>3</sup> /min (211 cfm) up to 10.5 bar	8 m <sup>3</sup> /min (282 cfm) up to 10.5 bar	11 m <sup>3</sup> /min (388 cfm) up to 10.5 bar
<b>Dust collector</b> (Suction capacity)		15.6m <sup>3</sup> /min @ max 8bar	28m <sup>3</sup> /min @ max 8bar	28m <sup>3</sup> /min @ max 8bar
<b>Dimensions</b> (Transportation)	<b>Tier 3</b>	H 2,860 x L 9,290 x W 2,350	H 2,860 x L 9,290 x W 2,350	H 2,860 x L 9,290 x W 2,350
	<b>Tier 4 final</b>	Under Development	Under Development	Under Development
<b>Weight</b>	<b>Tier 3</b>	13,700 kg	14,000 kg	14,500 kg
	<b>Tier 4 final</b>	Under Development	Under Development	Under Development

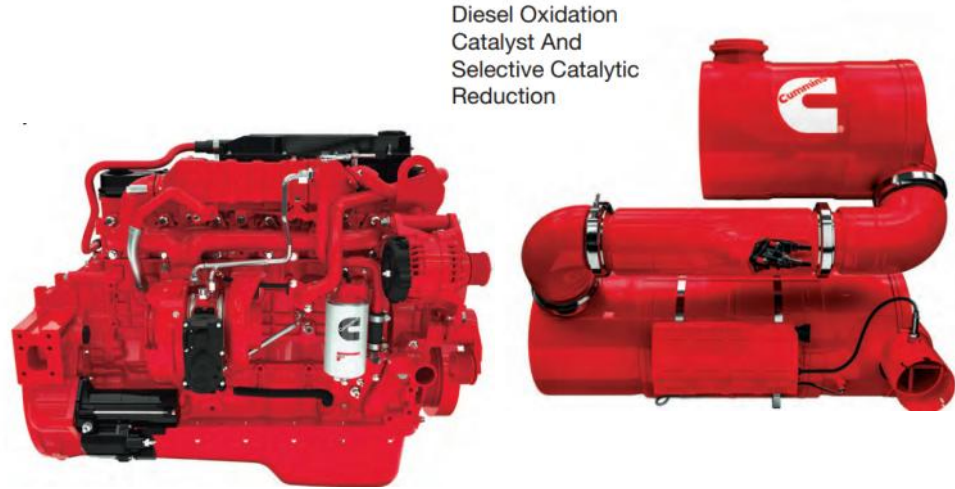
## 2. Key features



< EHD Drifter >



<PDS series air compressor>



Diesel Oxidation Catalyst And Selective Catalytic Reduction

<Cummins QSB6.7 engine>

- **New EHD Drifter**

- Optimized rock drill for best drilling.

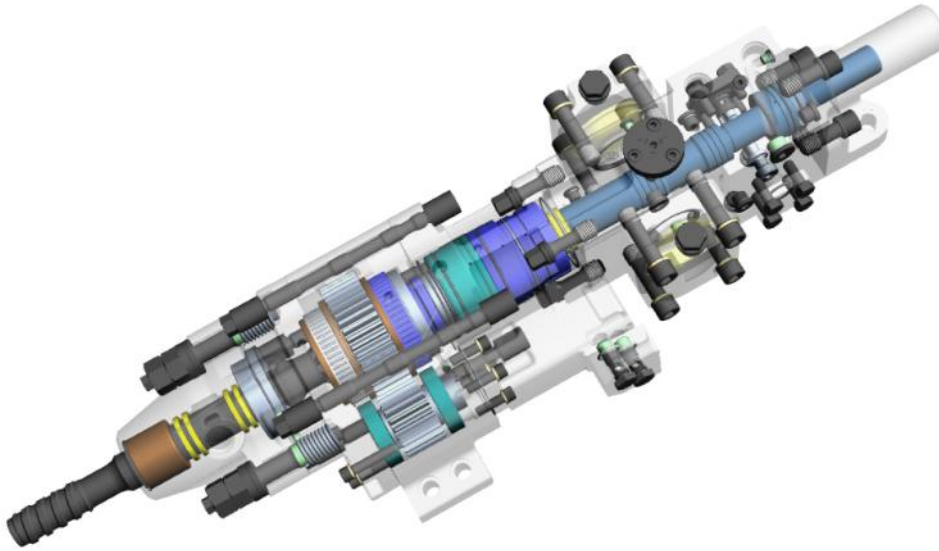
- **Tier 4 Final Cummins Engine**

- Fully Integrated Electronic Controls.
- EcoFit™ Ultra-Low Emission Systems.
- Cooled Exhaust Gas Recirculation (EGR).
- World wide register and service availability

- **Air Compressor**

- High effective Screw Rotor
- New Unloading System
- Easy serviceability and access to components

## 2. Key features *Drifter (EHD series)*



ITEM	EHD185	EHD210	EHD230
Base Rig	T400	T450	T500
Hole range	64~102mm	75~115mm	75~127mm
Drill steel	T38 / T45	T45 / T51	T45 / T51
Impact power	18.5 kW	21 kW	23 kW
Impact frequency	50 Hz	50 Hz	42 Hz
Rotation speed	170 rpm	140 rpm	140 rpm
Hyd. Damping	Std	Std	Std
Reverse Percussion	Std	Std	Std
Weight	236 kg	236 kg	246kg
Length	1285mm	1285mm	1285mm

### • Features & Benefits

- Hyd. damping & reverse percussion
- Simple design & less inner parts
- Low maintenance cost
- Reliable & durable structure
- Enhanced productivity

## 2. Key features



*Engine*

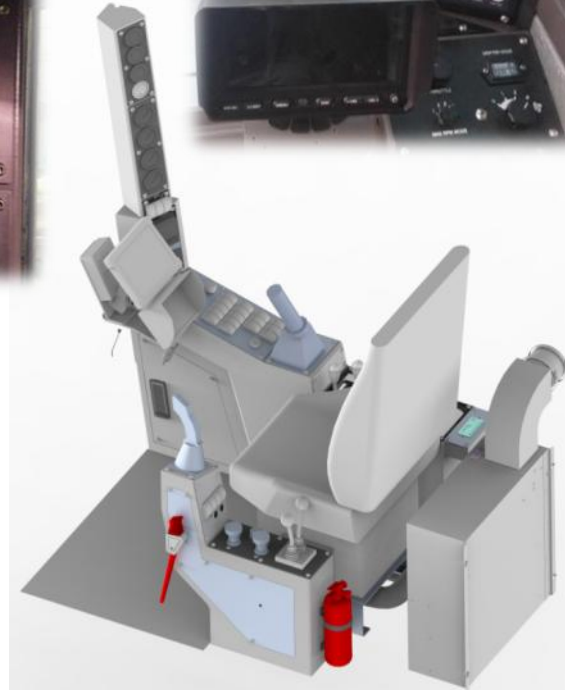
Model	CUMMINS QSB6.7 (USA)
Power	260HP@2,200rpm/ 990Nm@1,500rpm
Aspiration	Turbocharged After cooled
Cylinder	6 cylinder, 107mm Bore, 124mm Stroke
Displacement	6.7L
Emission Certification	Tier IV Final

## 2. Key features

### Control System



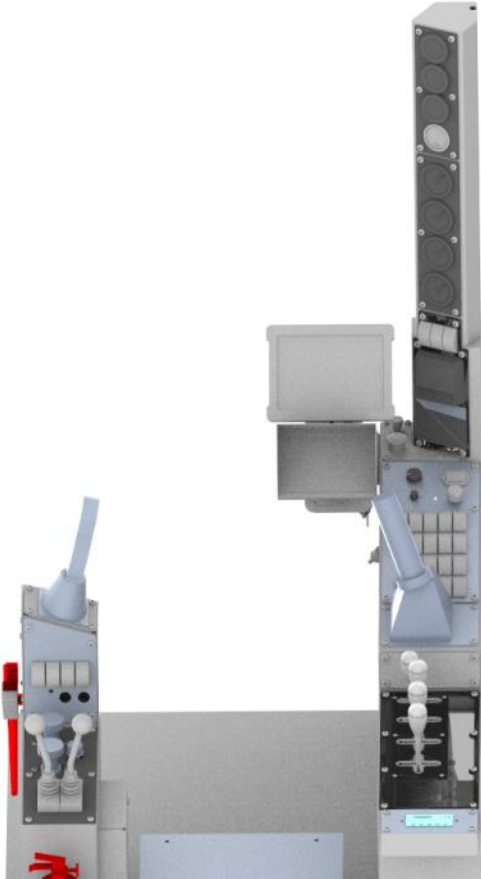
- Wide front view
- Easy to operate
- Functionally arranged
- Ergonomic Joystick system
- Engine Max RPM select mode



- Engine Power View-equipped
- Electrically controlled:
  - Percussion / Air / ARC
- Hydraulically controlled ;
  - Rotation / Feed / Boom / Travel



## 2. Key features *Drilling Support System*



<New control system>

- Integrated joystick control
- Fully-automatic rod changing
- Synchronized rod connection



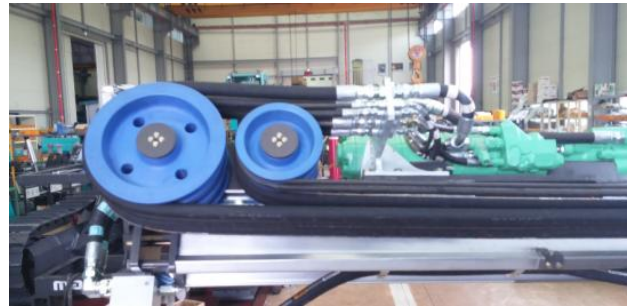
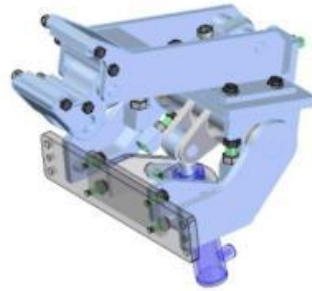
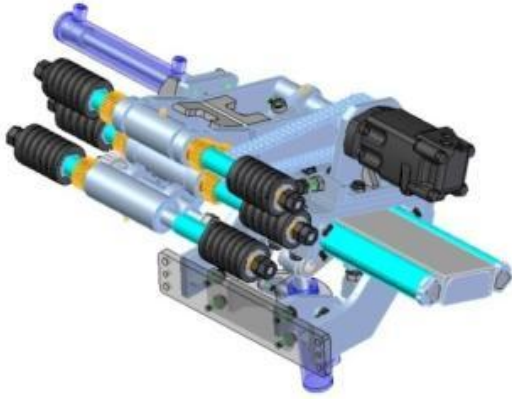
<Integrated system Valve block>

- LS system
- Anti-jamming system
- Super rotation system
- Collaring percussion system



# Top Hammer Drill T Series

## 2. Key features *RM(Roller & Magazine type) ARC System*



- Simple structure and less moving parts
- Easier operation, fast and reliable.
- Fast rod changing mechanism
- Synchronized rod connection
- Two drum hose reel



## 3. Maintainability



<Hour meter for Drifter>



<Urea tank and pump>



< Auto lubrication oil system>



<Service friendly engine compartment>

- **Hour meter for rock drill**
  - For exact maintenance period
- **Urea tank and pump**
  - For easy access and urea filling
- **Auto lubrication oil system**
  - Supplies lubricating oil to gears inside drifter
- **Wide engine compartment**
  - For easy access and serviceability

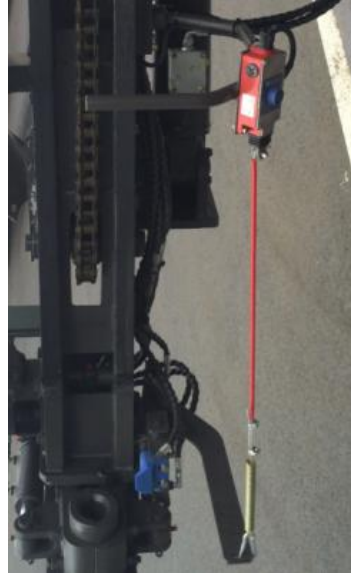
## 4. Safety devices



< Emergency stop switches >



<Safety lever>



<Emergency stop wire>



<Cab safety guard>



<Rotating Beacon>



< Fire extinguisher & Emergency hammer >

- **Emergency stop functions**

- Lever & button in cab
- Emergency wire on mast

- **Fire extinguisher in cab**

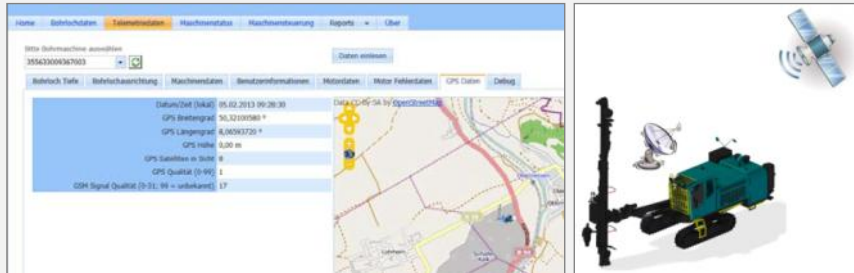
- **Emergency hammer in cab**

- **Cab guard-equipped**

# Top Hammer Drill T Series

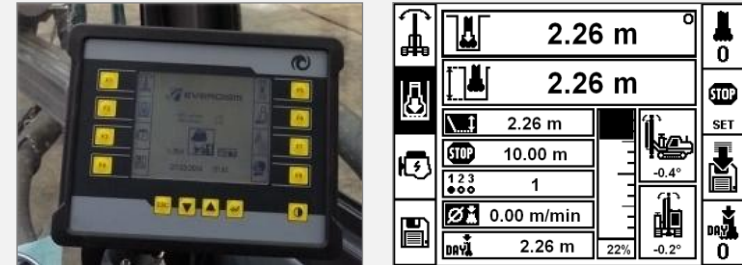
## 5. Optional equipment

### Remote monitoring system



- GPS positioning
- Performance & condition monitoring with GSM access
- Remote control via World Wide Website

### Drilling support system



- Hole depth and machine position indicating
- Auto feed stop
- Performance record & management

### Water misting system



- Indispensable application in broken or unstable ground, soil.
- Prevent hole crumbling and bit jamming during drilling.
- Dramatically improve drilling efficiency and productivity.

### Cold climate kit



- Engine start below -50°C temperature
- Engine coolant heating system by diesel fuel
- Auto timer embedded

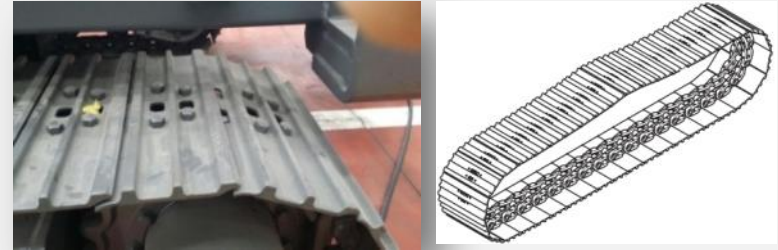
## 5. Optional equipment - continued

### Rearview camera & monitor



- Safe & convenient during backward movement

### Triple grousers track



- Stable drive in flatland

### Centralized greasing system



- BEKA lubrication system
- Greasing over 50 points at one go

### Drilling depth and angle indicator



- Operator friendly
- Simple sequence

# Top Hammer Drill T Series



Reference \_ U.S.A



# Top Hammer Drill T Series



Reference \_ Australia



## Specification Comparison

Sort	EVERDIGM T400	Atlas Copco Power ROC T30	Sandvik DX680	Furukawa HCR900
Engine	Cummins / QSB6.7 190HP	Cummins / QSB4.5 160HP	200HP	CAT C7 225HP
Compressor	6m <sup>3</sup> /min 10.5bar	5.8m <sup>3</sup> /min 10bar	6.2m <sup>3</sup> /min 10bar	6.1m <sup>3</sup> /min 10.3bar
Rock Drill	EHD185 / 18.5kW	COP1640 16kW	HL 650 17.5kW	HD709 14.2kW
Hole Size Drill Depth	102mm 25m	89mm 25m	102mm 22m	102mm 22m





## Specification Comparison

Sort	EVERDIGM T450	Atlas Copco Flexi ROC T35	Sandvik DX700	Furukawa HCR1200
Engine	Cummins / QSB6.7 190HP	Cummins / QSB6.7 190HP	CAT C7 225HP	CAT C7 225HP
Compressor	8m <sup>3</sup> /min 10.5bar	7.7m <sup>3</sup> /min 10bar	8.1m <sup>3</sup> /min 10bar	8.1m <sup>3</sup> /min 10.3bar
Rock Drill	EHD210 21kW	COP1840 18kW	HL 710 19.5kW	HD712 18.2kW
Hole Size Drill Depth	115mm 25m	115mm 25m	115mm 22m	102mm 22m



# Appendix

## Specification Comparison

Sort	EVERDIGM T500	Atlas Copco Flexi ROC T45	Sandvik DX800	Furukawa HCR-1500
Engine	Cummins QSB6.7, Tier4F, 260HP@2,200rpm	Caterpillar C9 325HP@1,900rpm	Caterpillar C7 250HP@rpm	Caterpillar C9 348HP@2,200rpm
Compressor	11m <sup>3</sup> /min 10.5bar	13.4m <sup>3</sup> /min 12bar	9.6m <sup>3</sup> /min 10bar	13.5m <sup>3</sup> /min 10.3bar
Rock Drill	EHD230 23kW	COP2560 25Kw	HL810T 21Kw	HD715II
Hole Size Drill Depth	127mm 25m	5.5 (140)	5 (127)	5 (127)



**Thank you!**