



GEOTECHNICAL RIG

Pro360PU



Geotechnical drilling rig Pro360PU

The Pro360PU model is a drilling rig mounted on a 4x4 Toyota LandCruiser pick-up, that provides a total autonomy even to reach difficult access areas.

The vehicle is delivered in its tropicalized version, with a flat platform for the rig, and reinforced suspensions, bumpers and tyres.

Versatile and powerful, with its Yanmar 36 HP engine, this drilling rig is dedicated to soil and environment investigations, as well as shallow geological and mineral exploration, using either augers or coring, down to around 40 meters.

The rotation head includes two hydraulic motors, and can be equipped with a top hammer for rotary-percussion drilling. It offers a maximum torque of 130 daNm, and 320 rpm for rotation, and is equipped with an air/water injection swivel.

The vehicle is equipped with two hydraulic stabilization jacks at the rear. When the rig is positioned, the drilling mast is raised using another hydraulic jack and locked in drilling position, allowing a safe operation of the rig..

The drilling levers are located on an ergonomic control panel. The rig is equipped with an emergency stop button on the control panel, and safety plates along the mast. It can also be equipped with a protection cage.

The rig can be equipped with additional equipment and options : triplex type mud/water injection pump, rod clamp or auger guide, manipulation winch, hydraulic capstan for SPT testing, top hammer for percussion.

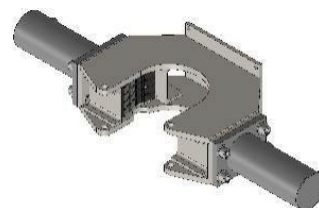
Triplex injection pump



Manipulation winch



Rod clamp





GEOTECHNICAL RIG

Pro360PU

Technical specifications

Vehicle	Toyota LandCruiser V6 single cabin with reinforced suspensions and bumpers Flat aluminium platform dim. 170 x 230 cm Equipped with a roof rack and a spare wheel
Engine	Yanmar diesel engine 36 HP (26,8 kW) @ 3000 rpm Gasoil tank 25 litres Hydraulic oil tank 100 litres Triple hydraulic pump
Chassis	Mechanically welded steel skid 2 rear hydraulic stabilization jacks
Rotation head	Variable displacement rotation head TR 220/300 TI : - Torque : 43 to 130 daNm - Rotation speed : 100 to 320 rpm Option : rotation head TR 170/900 : - Torque : 55 to 165 daNm - Rotation speed : 180 to 550 rpm Air/water injection swivel Floating shaft with thread 2"3/8 Reg pin
Mast	Total length : 3000 mm (useful 2100 mm) Translation by motor and chains Push and pull-up force : 1200 kg Raising with hydraulique jack Auger guide Option : rod clamp with 150 mm opening Safety plates along the mast
Control panel	Circuits are controlled by manual levers Pressure gauges for rotation and translation Emergency stop button for the engine
Options	Water injection pump 80 l/min – 40 Bars Manipulation winch 500 kg capacity Optional rotation head with high torque Top hammer for rotary percussion Lateral rod rack LED night lightning Protection cage

Rear stabilisation and protection cage



Control panel