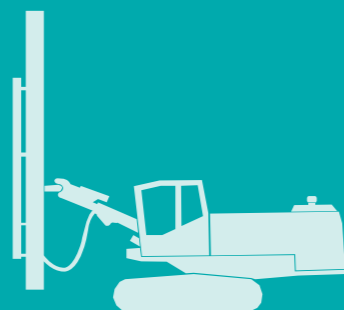


T500

Top-Hammer Drill Rigs



BUILD THE FUTURE

EVERDIGM

WWW.EVERDIGM.COM

Sales & Marketing

Room#1203, WoolimLion's Valley2,
2 Gasan digital 1-ro, Geumcheon-gu Seoul, Korea
Tel +82-2-801-0780 Fax +82-2-801-0899
Email Drill@everdigm.com

Head office & Factory

49, Buyeong-gil, Jincheon-eup, jincheon-gun,
Chungcheongbuk-do, Korea
Tel +82-43-530-3300 Fax +82-43-530-3426



www.youtube.com/user/everdigm01



www.facebook.com/everdigmCo

EVERDIGM

T500

With advanced design and product support system, EVERDIGM blast-hole drill rigs ensure safety and comfort drilling work as well as rapid and simple maintenance through easy access to key components. The long reach scope of boom can increase drilling coverage range & productivity significantly and large capacity of air compressors and powerful rotation torque make EVERDIGM blast-hole drill rigs high productive machine in its class.



Drifter
Optimized Rock Drill for Powerful Performance

Aluminium Mast
Light, but Rigid Structure

RM Auto Rod Changer (RM ARC)
Innovative Rod Changing System Operated by Roller & Magazine

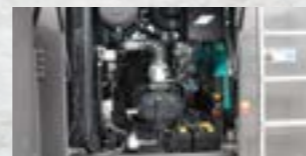
Folding Boom
Longer & Wider Working Coverage Easy & Convenient Drilling



Cabin
Electric / Hydraulic Joystick Control

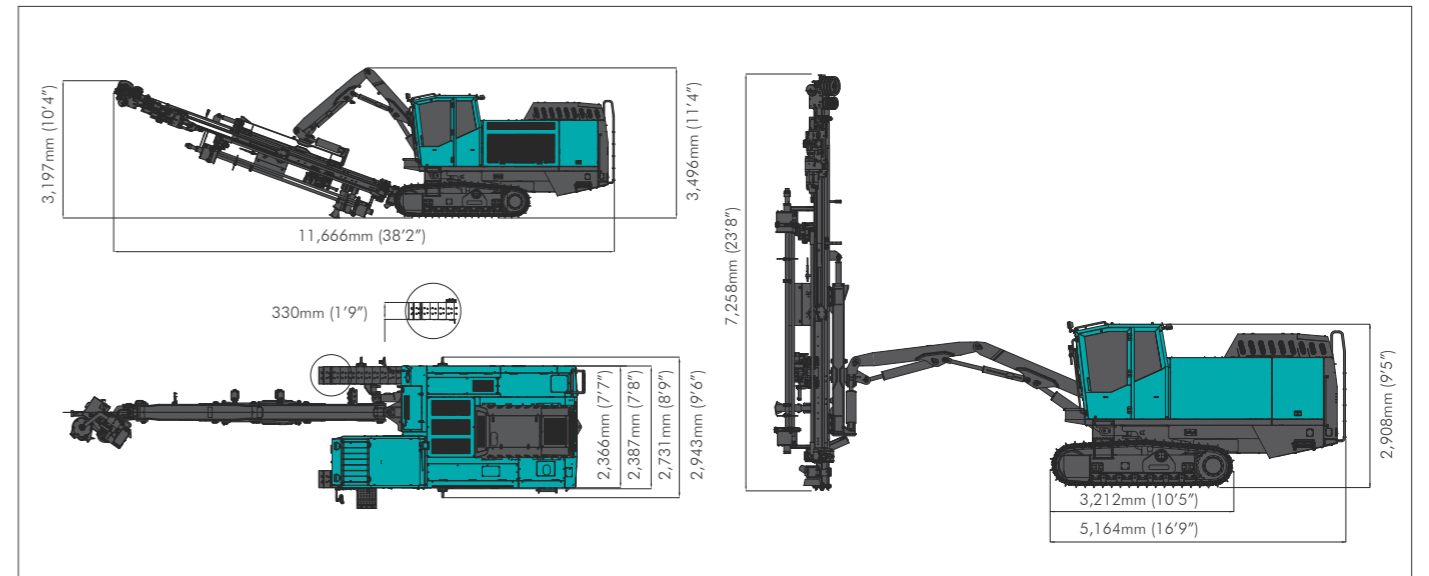


Engine
Environmental Friendly Tier 4 Engine



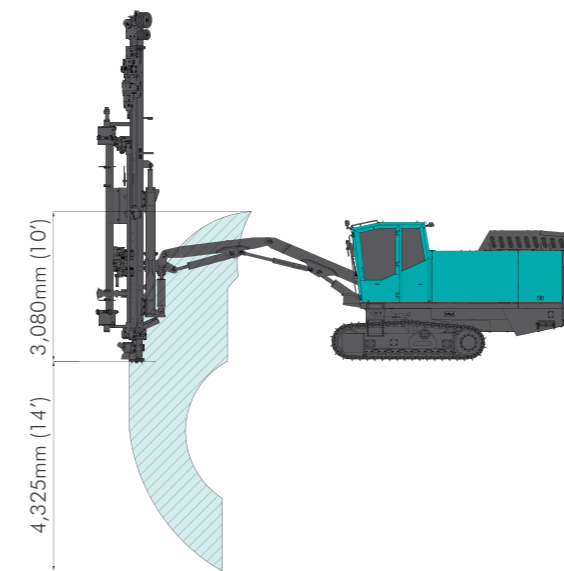
Compressor
Sufficient Air Delivery for Deeper Drilling

Dimensions

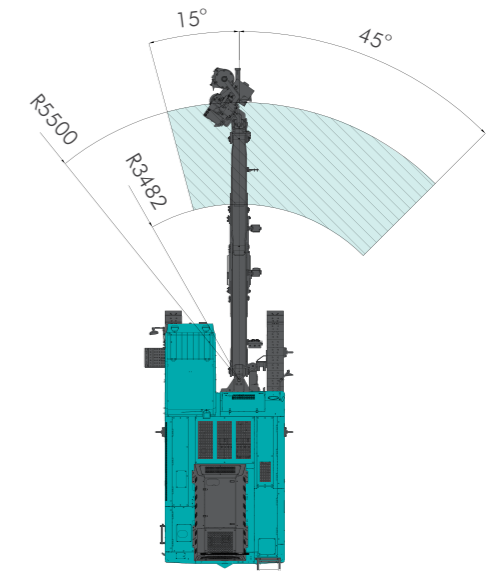


Coverage Areas

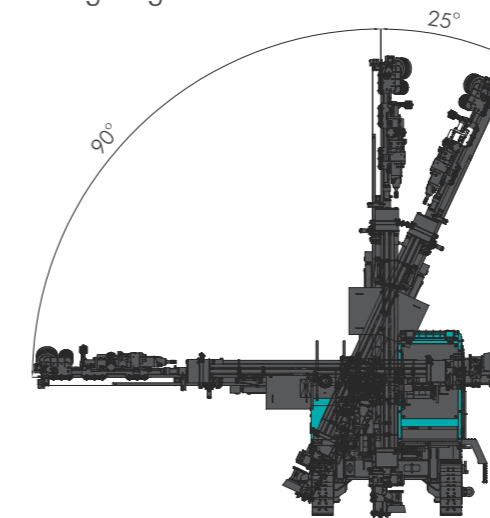
Vertical Reach



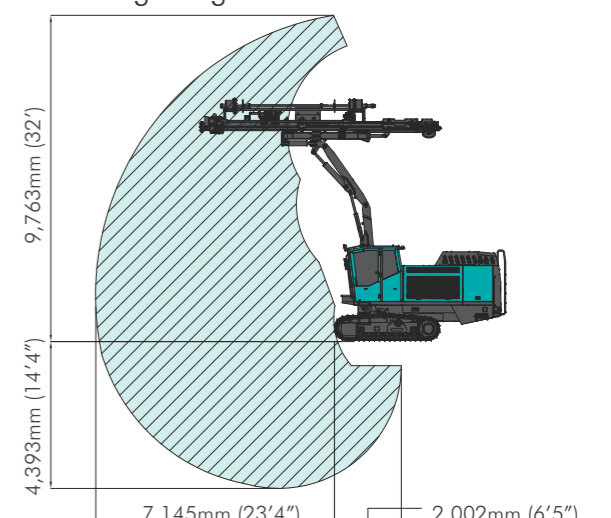
Horizontal Reach



Feed Swing Angles



Working Range



Specification

Recommended Hole Range	
Hole Diameter	76~127 mm (3"~5")
Drill Steel (rod)	T45,T51-3,660 mm (12')
Hole Depth	25 m (82')

Drifter	
Model	HC150 (EHD210)
Impact Power	21 kW
Max. Impact Frequency	41.7 Hz (45 Hz)

Engine	
Model	QSB6.7 , Tier 4 Final
Rated Output	193.8 kW (260 hp) at 2,200 rpm
Fuel Tank Capacity	500 ℓ (132b US gal)

Compressor		
Free Air Delivery	11 m ³ /min	(388 cfm)
Air Pressure	10.5 kg/cm ³	(149 psi)

Boom		
Type	Folding Boom	
Length	5,500 mm (18')	
Swing Angle	L 15° / R 45°	
Lift Angle	UP 85° / Down 0°	

Dimension		
Weight	14,800 kg	(32,630 lb)
Overall Height	3,490 mm	(11'5")
Overall Length	11,890 mm	(39')
Overall Width	2,390 mm	(7'8")