



## GEOTECHNICAL RIG

### Pro360Ex



The Pro360 model is a light geotechnical drilling rig (36 HP engine), versatile and with low operation costs, dedicated to soil and environment investigation.

It is mounted on self-propelled rubber tracks, and is equipped for destructive and coring rotary drilling, as well as percussion drilling, down to 40 meters.

With its simple and robust design, this rig is easy to maintain and will be operated in the most difficult job conditions. Very handy with its tracks and low skid, it can easily be used on uneven ground.

Moving the rig on site is performed with a radio remote controller.

This entry-level model offers a wide range of equipment and options. Its variable displacement rotation head offering up to 320 rpm for rotation and a maximum torque of 130 daNm.

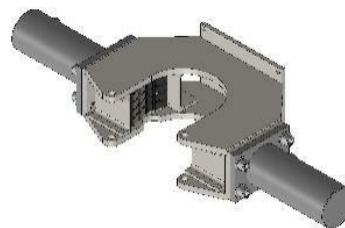
It comes as a standard with 4 stabilization feet (hydraulic jacks as option), an air/water injection swivel, a lateral rod rack, a rod clamp with 150 mm opening, and a mud/water injection pump supplied with its own thermal engine.

The mast is raised in vertical position using an hydraulic jack, and has a standard useful stroke of 1.8 meters, allowing to use 1.5 m long rods.

Other optional equipment is available, allowing to cover all type of needs:

- Screw type injection pump
- Hydraulic top-hammer and rotary-percussion head
- Equipment for semi-automatic SPT
- Radio remote controller to move the rig
- Hydraulic stabilisation jacks
- Sensors coupling for drilling parameters recording

The Pro360 rig is equipped with emergency stops.



Rod clamp

Triplex injection pump





Percussion top hammer



# GEOTECHNICAL RIG

## Pro360Ex

### Technical specifications

<b>Chassis</b>	Welded steel skid, with a self-propelled track 900 mm wide and 1230 mm long. 4 manual stabilisation feet (hydraulic jacks as option) Rig moving with manual proportional levers, with an emergency stop (radio remote control possible)	
<b>Engine</b>	Diesel engine Yanmar 36 HP (26,8 kW) @ 3000 rpm Air cooling system Gasoil tank 20 litres Hydraulic oil tank 40 litres Triple hydraulic pump Hydraulic oil cooler	 <p><i>Options: hydraulic stabilisation feet and protection cage</i></p>
<b>Rotation head</b>	Torque : 43 to 130 daNm (mkg) Rotation : 100 to 320 rpm Injection swivel for air and water Translation by motor and double chain Manual opening of the rotation head's skid	
<b>Mast</b>	Mast with useful stroke 1.8 m (for 1.5 m rods) Total height = 2900 mm (option 2200 mm) Mast raised with a hydraulic jack, with locking in the drilling position Push and pull-up force = 1200 kg (12 kN) Rod clamp with 150 mm opening	
<b>Safety</b>	Control panel with emergency stop button Safety plates along the mast Emergency stop on the optional remote	 <p><i>Version Pro360PU</i></p>
<b>Equipment and options</b>	Top hammer for rotary-percussion Hydraulic stabilisation jacks Displacement with radio remote controller Semi-automatic SPT Lateral rod rack Drilling parameters recording Mounting on Toyota Landcruiser pick-up (360PU)	

#### Dimensions in drilling position

(L x w x h) = 2500 x 900 x 2900 mm

#### Total mass :

900 kg to 1200 kg (depending on options)

#### Dimensions in movement

(L x w x h) = 2900 x 900 x 1800 mm