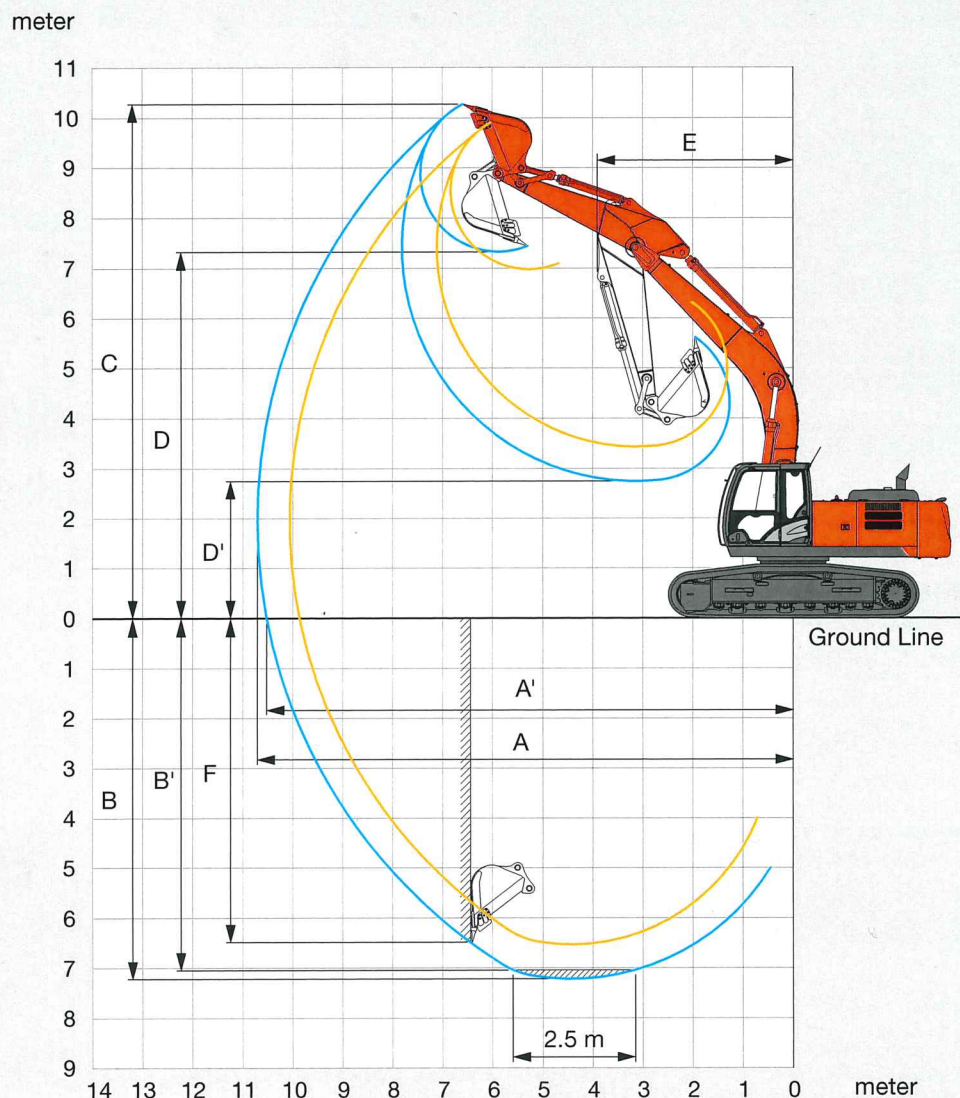


# SPECIFICATIONS

## WORKING RANGES: MONOBLOCK BOOM



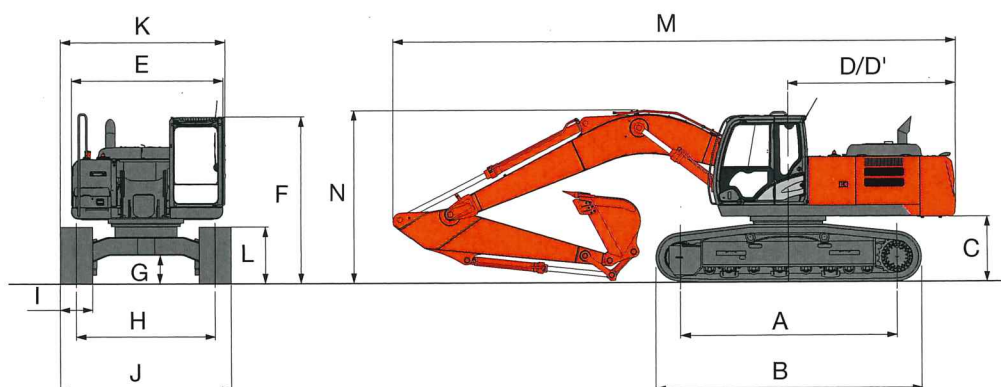
Unit: mm

Arm length	ZAXIS 290LC	
	2.42 m	3.11 m
A Max. digging reach	10 600	10 710
A' Max. digging reach (on ground)	9 860	10 520
B Max. digging depth	6 530	7 220
B' Max. digging depth for 2.5 m level	6 310	7 040
C Max. cutting height	9 910	10 270
D Max. dumping height	6 980	7 330
D' Min. dumping height	3 450	2 740
E Min. swing radius	4 060	3 900
F Max. vertical wall digging depth	5 650	6 480

Excluding track shoe lug

# SPECIFICATIONS

## DIMENSIONS



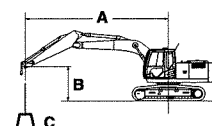
Unit: mm

	ZAXIS 290LC
A Distance between tumblers	4 050
B Undercarriage length	4 940
* C Counterweight clearance	1 170
D Rear-end swing radius	3 140
D' Rear-end length	3 140
E Overall width of upperstructure	2 870
F Overall height of cab	3 110
* G Min. ground clearance	510
H Track gauge	2 590
I Track shoe width	G 600
J Undercarriage width	3 190
K Overall width	3 190
* L Track height with triple grouser shoes	1 070
M Overall length	
With 2.42 m arm	10 640
With 3.11 m arm	10 550
N Overall height of boom	
With 2.42 m arm	3 450
With 3.11 m arm	3 200

\* Excluding track shoe lug      G: Triple grouser shoe

# LIFTING CAPACITIES

- Notes:
1. Ratings are based on ISO 10567.
  2. Lifting capacity does not exceed 75% of tipping load with the machine on firm, level ground or 87% full hydraulic capacity.
  3. The load point is the center-line of the bucket pivot mounting pin on the arm.
  4. \*Indicates load limited by hydraulic capacity.
  5. 0 m = Ground.



A: Load radius  
B: Load point height  
C: Lifting capacity

For lifting capacities, subtract bucket and quick hitch weight from lifting capacities.

## ZAXIS 290LC

Rating over-front Rating over-side or 360 degrees Unit : kg

Conditions	Load point height m	Load radius												At max. reach		
		1.5		3.0		4.5		6.0		7.5		9.0				meter
Boom 6.20 m	6.0							*8 020	*8 020					*7 790	5 740	7.46
Arm 2.42 m	4.5					*11 240	*11 240	*9 000	7 850	*8 010	5 590			7 710	4 930	8.11
Counterweight 6 200 kg	3.0					*14 150	11 150	*10 290	7 740	8 550	5 410			7 130	4 530	8.44
Shoe 600 mm	1.5							*11 390	7 100	8 360	5 230			6 960	4 400	8.49
	0 (Ground)					*16 230	10 370	11 470	6 910	8 230	5 120			7 170	4 500	8.27
	-1.5			*10 350	*10 350	*15 710	10 390	11 420	6 860	8 210	5 100			7 860	4 900	7.75
	-3.0			*18 760	*18 760	*14 210	10 540	*10 810	6 950					*9 060	5 850	6.86
	-4.5			*14 540	*14 540	*11 090	10 910							*8 930	8 360	5.42
Boom 6.20 m	6.0							*7 120	*7 120	*6 930	5 820			*4 740	*4 740	8.19
Arm 3.11 m	4.5					*9 810	*9 810	*8 170	8 010	*7 370	5 670			*4 730	4 390	8.78
Counterweight 6 200 kg	3.0					*12 760	11 530	*9 560	7 580	*8 060	5 470	*5 570	4 130	*4 890	4 070	9.09
Shoe 600 mm	1.5					*15 140	10 750	*10 860	7 190	8 390	5 260	6 380	4 040	*5 220	3 950	9.14
	0 (Ground)					*16 180	10 390	11 500	6 920	8 220	5 100			*5 800	4 020	8.93
	-1.5	*6 820	*6 820	*10 250	*10 250	*16 100	10 300	11 370	6 810	8 140	5 030			*6 800	4 310	8.45
	-3.0	*11 900	*11 900	*16 480	*16 480	*15 090	10 390	*11 370	6 830	8 190	5 080			7 980	4 960	7.65
	-4.5			*17 510	*17 510	*12 840	10 650	*9 480	7 030					*8 590	6 480	6.39

# EQUIPMENT

● : Standard equipment

○ : Optional equipment

## ENGINE

Alternator 50 A	●
Air cleaner double filters	●
Auto idle system	●
Auto shut-down control	●
Cartridge-type engine oil filter	●
Fuel pre-filter	●
Fuel main filter	●
Dust-proof indoor net	●
Dry-type air filter with evacuator valve (with air filter restriction indicator)	●
ECO/PWR mode control	●
Electrical fuel feed pump	●
Engine oil drain coupler	●
Fan guard	●
Fuel cooler	●
High performance water separator	●
Isolation-mounted engine	●
Maintenance free pre-cleaner	●
Muffler filter	●
Radiator, oil cooler and intercooler	●
Radiator reserve tank	●

## HYDRAULIC SYSTEM

Auto power lift	●
Control valve with main relief valve	●
Full-flow filter	●
High mesh full flow filter with restriction indicator	○
Hose rupture valve for arm	●
Hose rupture valve for boom	●
Pilot filter	●
Power boost	●
Suction filter	●
Swing dampener valve	●
Two extra port for control valve	●
Variable relief valve for breaker & crusher	●
Work mode selector	●

## CAB

All-weather sound suppressed steel cab	●
AM-FM radio	●
Ashtray	●
Auto control air conditioner	●
Auxiliary function lever (breaker or assist)	○
AUX. terminal and storage	●
Cigarette lighter 24 V	●
CRES V (center pillar reinforced structure) cab	●
Drink holder with hot & cool function	●
Electric double horn	●
Engine shut-off switch	●
Equipped with reinforced, tinted (green colour) glass windows	●
Evacuation hammer	●
Fire extinguisher bracket	○
Floor mat	●
Footrest	●
Front guard (lower mesh type)	○
Front guard (upper mesh type)	○
Front window washer	●
Glove compartment	●
Hot & cool box	●
Intermittent windshield wipers	●
Key cylinder light	●
Laminated round glass window	●
LED room light with door courtesy	●
Mesh guard (cab top)	○
OPG front guard Level II (ISO10262) compliant cab	○
OPG top guard Level II (ISO10262) compliant cab	○
Pilot control shut-off lever	●
Power outlet 12 V	●
Rear tray	●
Retractable seat belt	●
ROPS (ISO12117-2) compliant cab	●
Rubber radio antenna	●
Seat : air suspension seat with heater	●
Seat adjustment part : backrest, armrest, height and angle, slide forward / back	●
Short wrist control levers	●
Sun visor (front window/side window)	○
Transparent roof with slide curtain	●
Windows on front, upper, lower and left side can be opened	●
2 speakers	●
4 fluid-filled elastic mounts	●

## MONITOR SYSTEM

Alarm buzzers: overheat, engine oil pressure, overload	●
Alarms: overheat, engine warning, engine oil pressure, alternator, minimum fuel level, hydraulic filter restriction, air filter restriction, work mode, overload, etc	●
Display of meters: water temperature, hour, fuel rate, clock	●
Other displays: work mode, auto-idle, glow, rearview monitor, operating conditions, etc	●
32 languages selection	●

## LIGHTS

Additional boom light with cover	○
Additional cab roof front 2 lights	●
Additional cab roof rear 1 light	●
2 working lights	●

## UPPER STRUCTURE

Batteries 2 x 88 Ah	●
Counterweight 6 200 kg	●
Electric fuel refilling pump with auto stop and filter	○
Fuel level float	●
Hydraulic oil level gauge	●
Rear view camera	●
Rear view mirror (right & left side)	●
Swing parking brake	●
Tool box	●
Undercover	●
Undercover 6.0 mm reinforced	○
Utility space	●

## UNDERCARRIAGE

Bolt-on sprocket	●
Reinforced track links with pin seals	●
Shoe : 600 mm triple grouser	●
Travel motor covers	●
Travel parking brake	●
Track undercover	●
Upper and lower rollers	●
3 track guards (each side) and hydraulic track adjuster	●
4 tie down brackets	●

## FRONT ATTACHMENTS

Arm (lower reinforced)	●
Boom (reinforced)	●
Casted bucket link A	●
Centralized lubrication system	●
Dirt seal on all bucket pins	●
Flanged pin	●
HN bushing	●
Reinforced link B	●
Reinforced resin thrust plate	●
WC (tungsten-carbide) thermal spraying	●

## ATTACHMENTS

Accessories for 2 speed selector	○
Additional pump (50 L/min)	○
Assist piping	○
Attachment basic piping	●
Breaker and crusher piping	●
Pilot accumulator	●

## MISCELLANEOUS

Battery disconnect switch	●
Global e-service	●
Level indicator	●
Lockable fuel refilling cap	●
Lockable machine covers	●
Onboard information controller	●
Satellite communication system unit	●
Skid-resistant tapes, plates and handrails	●
Standard tool kit	●
Swing alarm	○
Travel alarm	●
Travel direction mark on track frame	●